

**G.A. Roof Plan as Proposed**

Scale: 1 : 232

Department	Area
Changing Areas	190.5 m <sup>2</sup>
Circulation	1,845.4 m <sup>2</sup>
Classroom	197.2 m <sup>2</sup>
Cleaner Stores	27.0 m <sup>2</sup>
Group Spaces	73.8 m <sup>2</sup>
Hall Space	1,117.4 m <sup>2</sup>
Kitchen	126.2 m <sup>2</sup>
Lobbies	259.3 m <sup>2</sup>
Office	363.9 m <sup>2</sup>
Plant / Riser	235.8 m <sup>2</sup>
Primary Teaching	833.0 m <sup>2</sup>
Reception	32.2 m <sup>2</sup>
Secondary Teaching	2,541.4 m <sup>2</sup>
Staff Rooms	102.1 m <sup>2</sup>
Stores	444.0 m <sup>2</sup>
Toilets	301.7 m <sup>2</sup>
Waiting	8.3 m <sup>2</sup>
<b>Total</b>	<b>8,699.1 m<sup>2</sup></b>

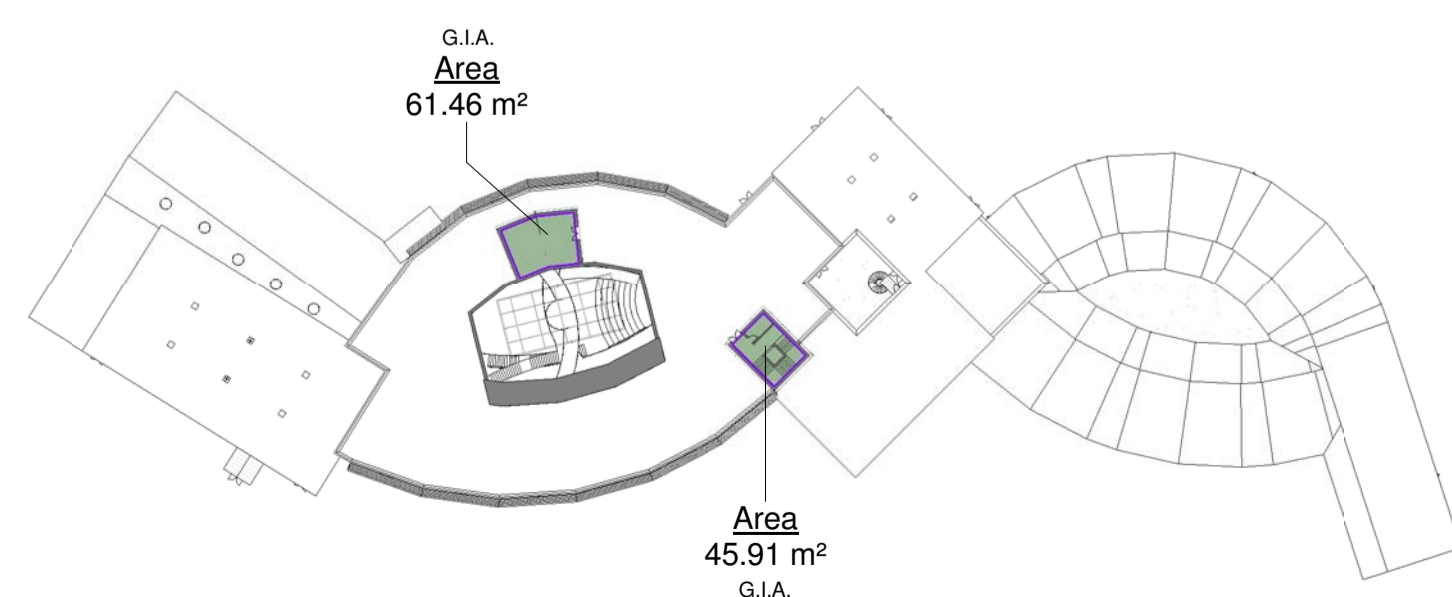
Name	Level	Department	Area
Plant Room	School Roof Top	Plant / Riser	61.5 m <sup>2</sup>
Stair Circ'	School Roof Top	Lobbies	33.1 m <sup>2</sup>
Lift	School Roof Top	Circulation	3.4 m <sup>2</sup>
Riser	School Roof Top	Plant / Riser	6.6 m <sup>2</sup>
<b>Total</b>			<b>104.6 m<sup>2</sup></b>

Level	Area
Ground Floor Plan	5,356.1 m <sup>2</sup>
First Floor	2,067.1 m <sup>2</sup>
Second Floor	1,627.4 m <sup>2</sup>
School Roof Top	107.4 m <sup>2</sup>
<b>Total</b>	<b>9,158.0 m<sup>2</sup></b>

**Ground Floor G.I.A. : 5356m<sup>2</sup>**  
**First Floor G.I.A. : 2067m<sup>2</sup>**  
**Second Floor G.I.A. : 1627m<sup>2</sup>**  
**Roof G.I.A. : 107m<sup>2</sup>**

**Total G.I.A. : 9158m<sup>2</sup>** (Excluding external wall thickness & external courtyard areas, including internal wall thickness)

**Total Building Footprint Area: 5609m<sup>2</sup>** (Including external wall thickness & excluding external courtyard areas)



Rev.	Revision description	Drawn	Checked	Date
A	First Issue of Drawing	AJR	SJH	05.08.13
B	Second Issue of Drawing	AJR	SJH	06.10.13
C	Location of Plant Room amended. Primary roof layout updated. Roof layout adjacent to Sports Hall updated. Solar PV indicated. Windcatcher system indicated to Sports Hall and Primary Hall roof. Indicative Brise soleil added. Drawing issued for comment	AJR	SJH	16.01.14
D	Drawing issued for L.A. Planning Approval	AJR	SJH	27.01.14

**PLANNING PERMISSION**

**lovelock mitchell** ARCHITECTS

Lovellock Mitchell Architects  
 3 Stanley Street Chester CH1 2LS  
 Tel +44 (0) 1244 404321  
 Fax +44 (0) 1244 404340  
 e-mail: admin@lovelockmitchell.com  
 web: www.lovelockmitchell.com

Project  
**Holywell Co-Located Primary & Secondary Schools**

Title  
**G.A. Roof Plan as Proposed**

Scale @ A1 Drawn By AJR Checked By SJH Date 05.08.2013

Job No. 1115 : 210 Sheet No. 210 Rev. D



VISUAL SCALE 1:225 @ A1