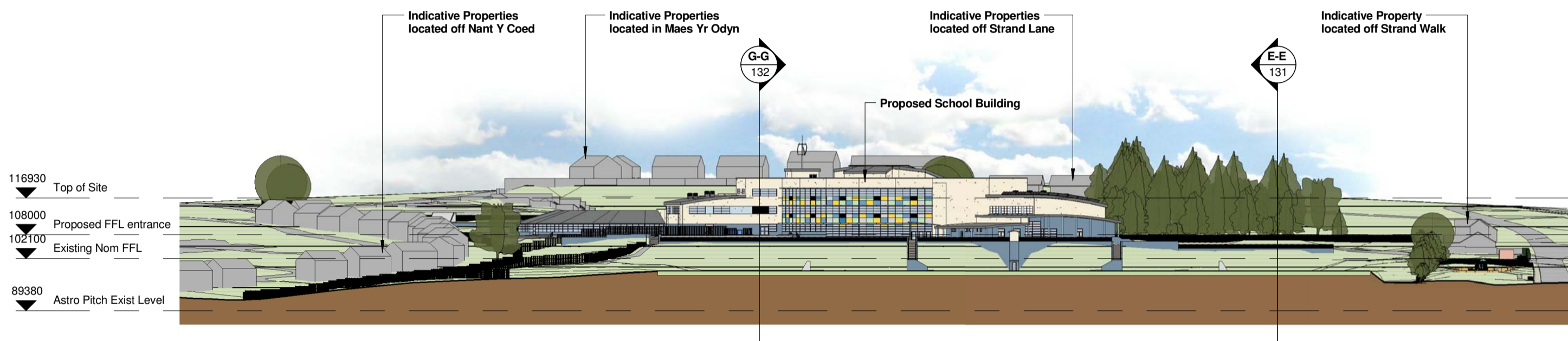
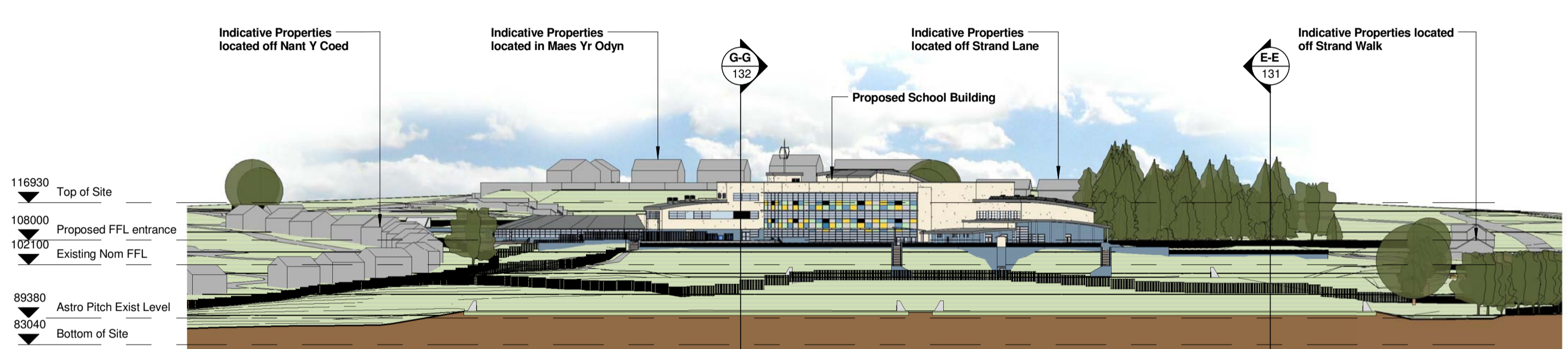


Site Section G-G
Scale: 1 : 1000



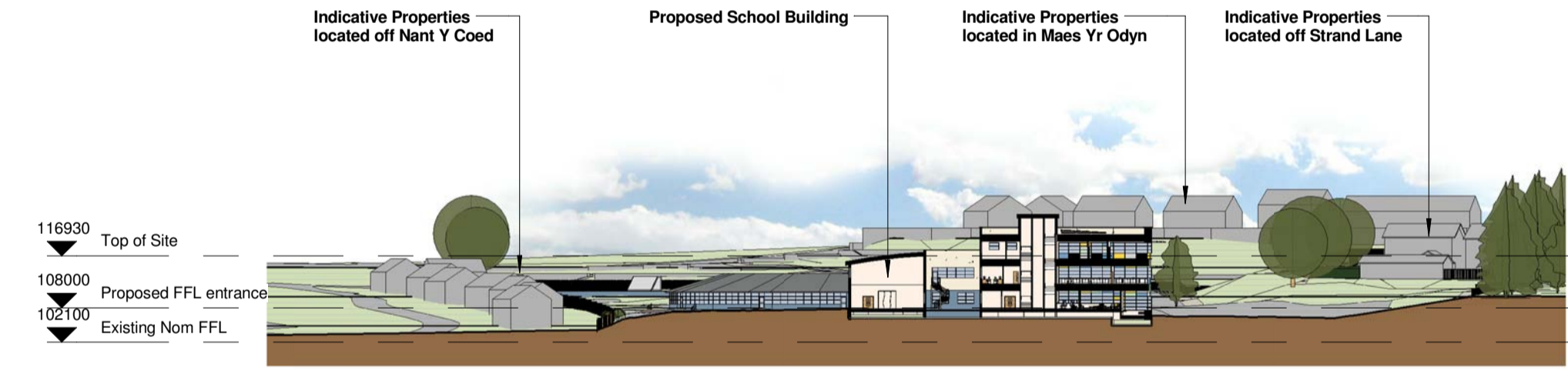
Site Section H-H
Scale: 1 : 1000



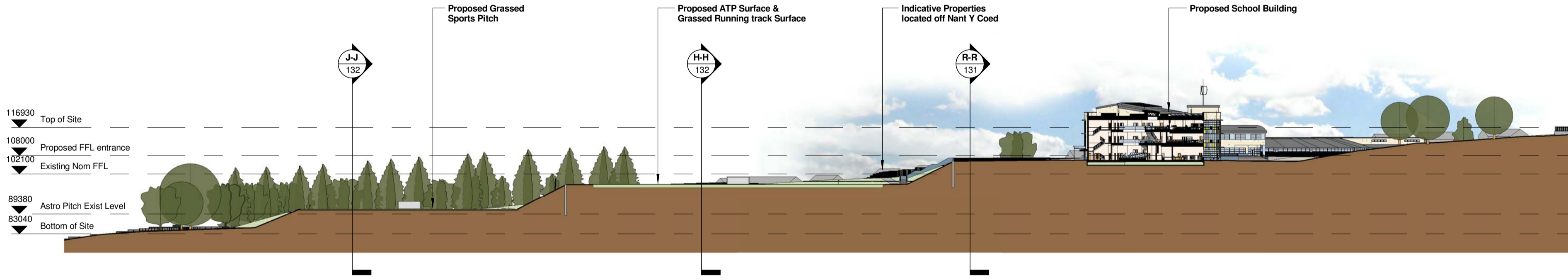
Site Section J-J
Scale: 1 : 1000



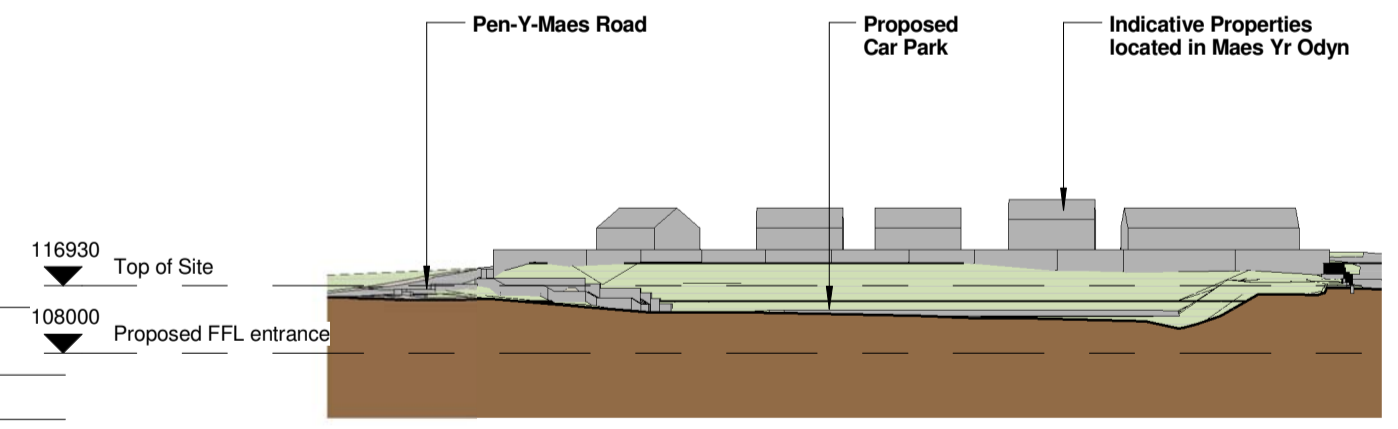
Site Section K-K
Scale: 1 : 1000



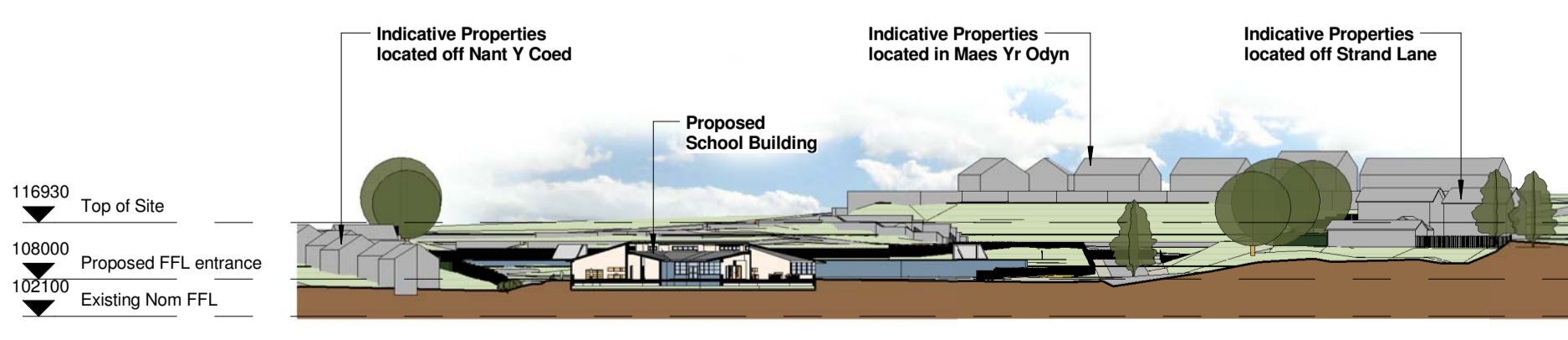
Site Section L-L
Scale: 1 : 1000



Site Section M-M
Scale: 1 : 1000



Site Section N-N
Scale: 1 : 1000



Site Section P-P
Scale: 1 : 1000



Site Section Q-Q
Scale: 1 : 1000

A Drawing issued for L.A. Planning Approval		AJR	SJH	27.01.14
Rev.	Revision description	Drawn	Checked	Date
Project Status				
PLANNING PERMISSION				

lovelock mitchell
ARCHITECTS

Lovellok Mitchell Architects
3 Stanley Street Chester CH1 2LS
Tel +44 (0) 1244 404321
Fax +44 (0) 1244 404340
e-mail: admin@lovelockmitchell.com
web: www.lovelockmitchell.com

Project
Holywell Co-Located Primary & Secondary Schools

Title
Site Sections as Proposed - Sheet 2

Scale @ A1	Drawn By	Checked By	Date
1 : 1000	AJR	SJH	14.11.13

Job No.	Sheet No.	Rev.
1115	132	A

